



27 Heywood Grove, Sale, M33 6JP
£200,000

www.jordanfishwick.co.uk





jordan fishwick

- Two Bedroom Ground Floor Maisomette
- 10-Minute Walk to Sale Town Centre
- Private Entrance and Private South West Facing Garden
- Ground Rent - £10 p/a
- Council Tax Band A
- Quiet Cul-De-Sac Location
- Close to Metrolink and Motorway Access
- 125 Years from 1985
- Service Charge £117 p/a
- EPC - D

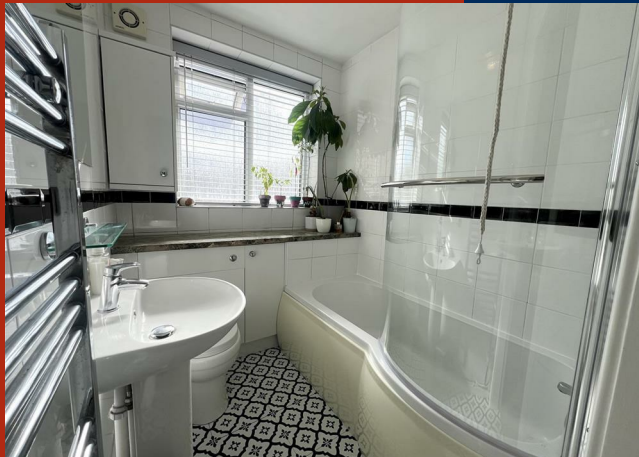
WELL-PRESENTED TWO BEDROOM MAISONETTE tucked away off Southern Road, on a private cul-de-sac. Fantastic location, only a short walk from Sale Town Centre and excellent access to motorway links. Located on the ground floor offering spacious living, with the benefit of a private entrance and private south-west facing rear garden.

Accommodation briefly comprises; private entrance hallway, generous lounge, two good sized bedrooms, fitted kitchen and bathroom with ample storage.

Council Tax Band A – EPC D.

CALL NOW TO VIEW.

£200,000



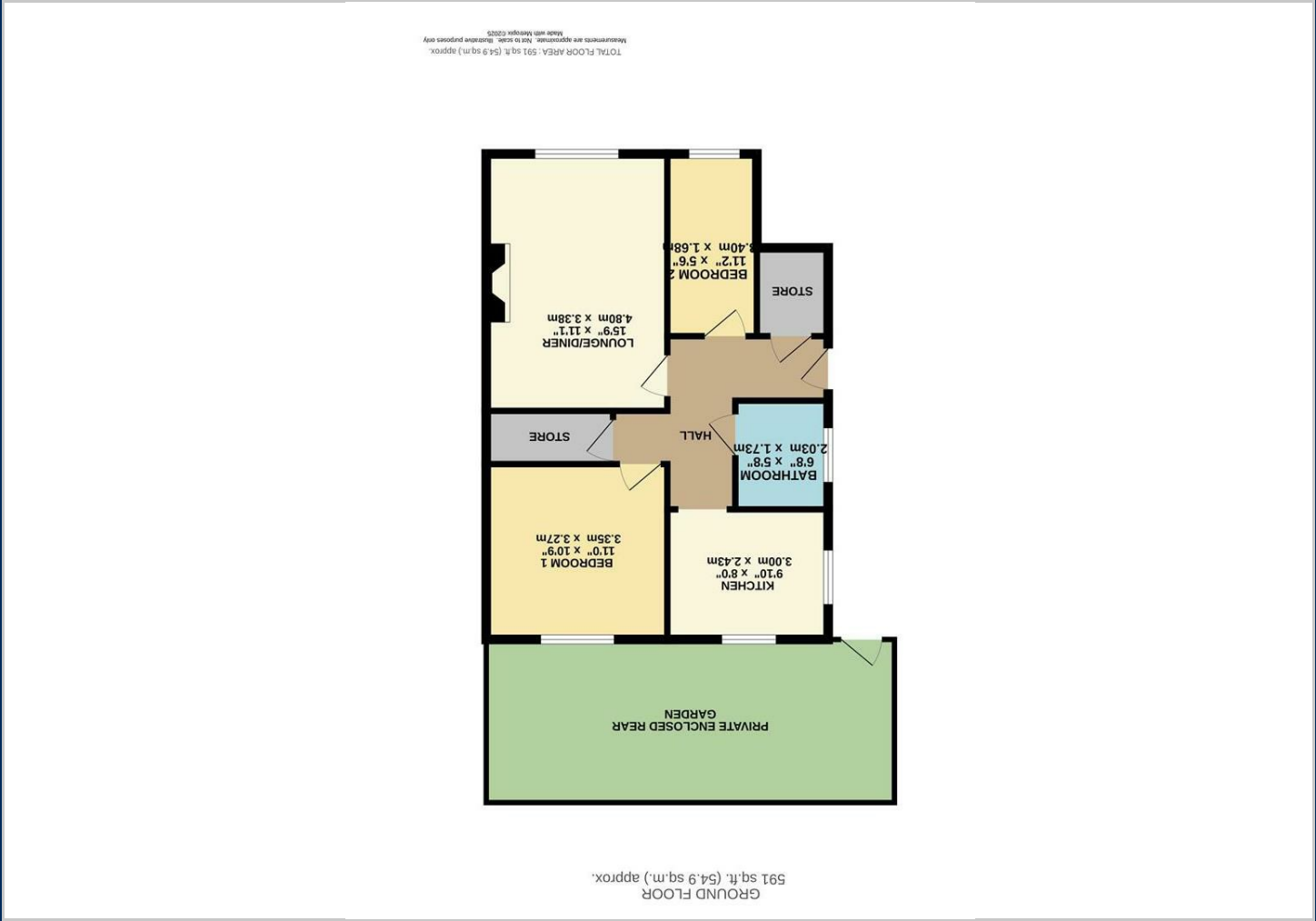
01619622828

Jordan fishwick

Why take a risk?
Sell Smarter







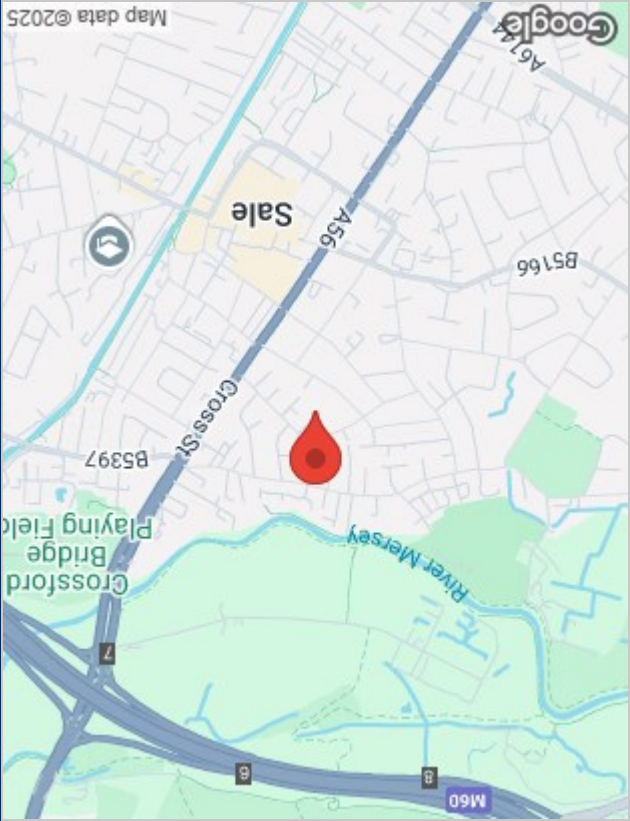
Viewing

Please contact our Sale Office on 0161 962 2828 if you wish to arrange a viewing appointment for this property or require further information.

The particulars are set out as a general outline only for the guidance of intended purchasers or lessees, and do not constitute, any part of a contract. Nothing in these particulars shall be deemed to be a statement that the property is in good structural condition or otherwise nor that any of the services, appliances, equipment or facilities are in good working order. Purchasers should satisfy themselves of this prior to purchasing.

Energy Efficiency Rating		
Current	Potential	
Very energy efficient - lower running costs		
A (92 plus)		
B (81-91)		
C (69-80)		
D (55-68)		
E (39-54)		
F (21-38)		
G (1-20)		
Not energy efficient - higher running costs		
EU Directive 2002/91/EC		
England & Wales		

Energy Performance Graph



Location Map